

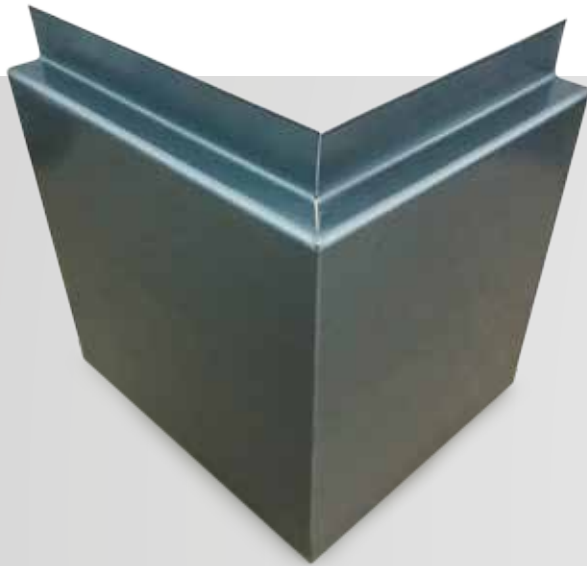
Specialist roofing and façade systems fabricator



Interlocking Façade and Soffit Reveal Panels

www.belfryltd.co.uk

Belfry
FAÇADE SYSTEMS LTD



*“Mechanically notched corners,
for perfect quality every time.”*



Interlocking Reveal Panels

Belfry's Interlocking Reveal panels give an excellent, slender appearance to any façade or soffit area and are a versatile and cost-effective solution to your rainscreen requirements. Commonly these are fixed back to an adjustable aluminium helping hand system which is designed to meet the site specific dead and wind loads.

Modular widths are conventionally between 200mm and 300mm and can be used horizontally, vertically or for a really unique appearance, diagonally. Each panel is continuously roll formed and can be produced in a wide array of metals including Zinc, Copper, Aluminium and Coated Steel.

In addition to offering high-quality aesthetics, Interlocking Panels offer a cost-effective solution when compared to similar façade systems.



Easy to Install

Our Zinc Interlocking Reveal panel system is simple to install and can be completed by any competent facade contractor, although it is recommended that contractors attend our 1-day workshop course, aimed at familiarising installers with our standard details and installation techniques.

Alternatively we are able to offer a list of recommended contractors who are able to complete your installation.

The reveal panels simply interlock into one another using a male to female joint. The hidden fixings are installed in female leg which are then covered by the succeeding panel.

- 
- » Interlocking panels give an excellent slender appearance to any façade or soffit area.
 - » Available in a wide range of finishes including Zinc, Copper , Aluminium and Steel.
 - » A vast array of design options provides freedom to the designer.
 - » A low maintenance and durable solution for the lifetime of the building.
 - » Ends & Corners are mechanically notched for perfect panels every time.
 - » Associated flashings, cappings, louvres and weatherings are also fabricated by Belfry to create a complete building façade package.
 - » Suitable for both new build and refurbishment projects.
 - » Flexible system depths to incorporate a range of insulation thickness and types.
 - » Technical support and standard details offered.
 - » In-house provision of specifications.



Cost-effective solution



High-quality appearance



Can be used both horizontally and vertically



CWCT tested system



Design

Our Zinc Interlocking panel system has been CWCT tested to meet NHBC standards which can be essential on projects where there is a standard testing requirement, or alternatively functioning as a fantastic selling point providing quality assurance to your client.

At Belfry we provide a wide range of solutions to suit our client's requirements. We have library of typical details for our Interlocking Reveal Panel system and a design consideration summary to assist with our client's design. We also have a manufacturing partner for a suitable aluminium rainscreen support system, who can complete structural calculations to be used with our system.

Technical Data

System type	Rainscreen façade
Maximum length	6000mm
Maximum panel face width	180-350mm dependant on material
Reveal joint width	5-20mm as required
Support system	Metal or timber framing/support system
Panel fixings to rail	Self-tapping stainless steel 18/8 Screws
Fixings centres	600mm maximum

Case Studies



Material: Zinc
Contractor: Sanderson Contractors Ltd
Area: 200m²
Description: Our zinc interlocking panels were used as the main façade for the extension to the new JD Wetherspoon pub and restaurant, Leeds.



Material: Coated Steel
Contractor: Places for People
Area: 2500m²
Description: For this new residential project, coated steel interlocking panels were used to cover the upper level cladding areas where non-combustible materials were a requirement.



Material: Zinc
Contractor: Bouygues UK
Area: 2000m²
Description: A new residential project, zinc interlocking panels were used in the upper level cladding zones to provide a modern contrast to the traditional brickworks.



Material: Zinc
Contractor: ISG Plc
Area: 1100m²
Description: Renovation works for the office block to overclad the existing brickwork façade with zinc interlocking panels, giving the building an exciting modernised appearance.



Belfry Façade Systems Ltd
Unit 2 - Astore House
Padholme Road East
Peterborough, Cambs
PE1 5XL